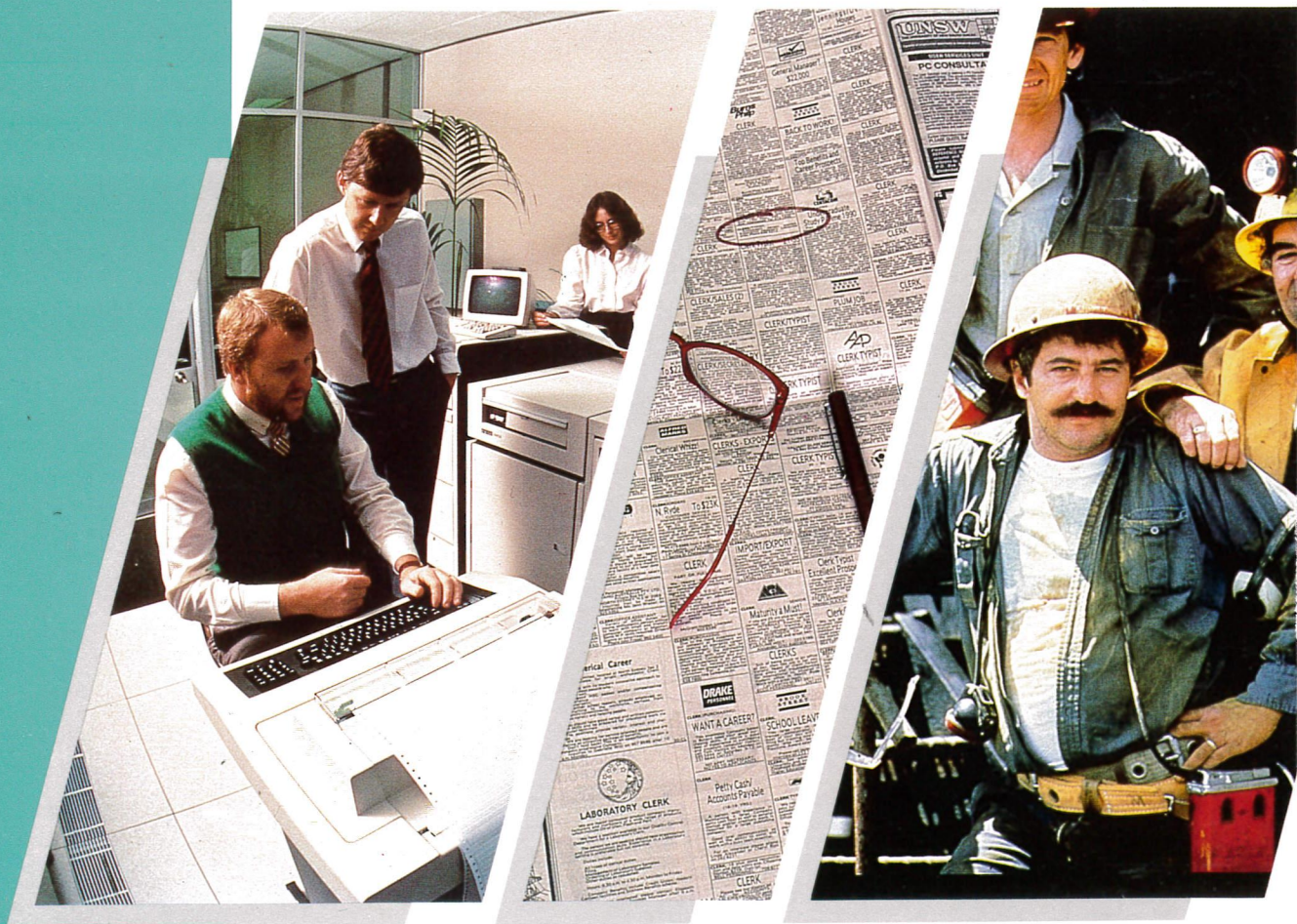


May 1990

# PERSONS WHO HAD RE-ENTERED THE LABOUR FORCE AUSTRALIA



**EMBARGOED UNTIL 11.30 A.M. 12 OCTOBER 1990**

**PERSONS WHO HAD RE-ENTERED THE LABOUR FORCE  
AUSTRALIA  
MAY 1990**

**IAN CASTLES  
Australian Statistician**

**AUSTRALIAN BUREAU OF STATISTICS**

**CATALOGUE NO. 6264.0**

© Commonwealth of Australia 1990

Printed by R. D. RUBIE, Commonwealth Government Printer, Canberra

---

PHONE INQUIRIES	<ul style="list-style-type: none"> <li>• <i>about these statistics and the availability of related unpublished statistics</i> — contact Ms. Cheryl Trussler on Canberra (06) 252 6661 or any ABS State office.</li> <li>• <i>about other statistics and ABS services</i> — contact <b>Information Services</b> on Canberra (06) 252 6007, 252 6627, 252 5402 or any ABS State office.</li> </ul>
MAIL INQUIRIES	<ul style="list-style-type: none"> <li>• <i>write to Information Services, ABS, P.O. Box 10, Belconnen, A.C.T. 2616</i> or any ABS State office.</li> </ul>
ELECTRONIC SERVICES	<ul style="list-style-type: none"> <li>• on <b>DISCOVERY</b> — key *656#.</li> <li>• on <b>AUSSTATS</b> — phone (06) 252 6017.</li> <li>• on <b>TELESTATS</b> — phone (06) 252 5405 Main Economic Indicator inquiries, (06) 252 5404 Foreign Trade statistics inquiries.</li> </ul>

---

## CONTENTS

<i>Table</i>	<i>Page</i>
.. Summary of Findings	1
<b>Persons aged 15 and over, May 1985, May 1987 and May 1990—</b>	
1 Summary of labour force activity, whether had re-entered the labour force and gender	4
<b>Persons who had re-entered the labour force</b>	
Whether working or looking for work—	
2 Age, birthplace, period of arrival and selected details of previous job	4
3 Job search experience and other related characteristics	5
<b>Persons who were in the labour force in May 1990 but were not in the labour force twelve months ago—</b>	
4 Selected characteristics, whether worked continuously for a period of twelve months or more at some earlier time and whether not in the labour force for a period of twelve months or more	6
<b>Persons who were in the labour force in May 1990 but were not in the labour force twelve months ago and had worked continuously for a period of twelve months or more at some earlier time—</b>	
5 Selected characteristics, whether not in the labour force for a period of twelve months or more and gender	8
<b>Persons who had re-entered the labour force</b>	
Time since previous job—	
6 Occupation in previous job and main reason for wanting to work again	9
<b>Persons who had re-entered the labour force and were working as employees—</b>	
7 Main reason for wanting to work again, method of job attainment and full-time and part-time workers	10
<b>All populations—</b>	
8 States and Territories of usual residence	11
.. Explanatory Notes	13
.. Technical Note	15
.. Glossary	17
.. Special Data Services	18

### **ADDITIONAL DATA ON REQUEST**

The ABS offers a range of unpublished data from this survey upon request.

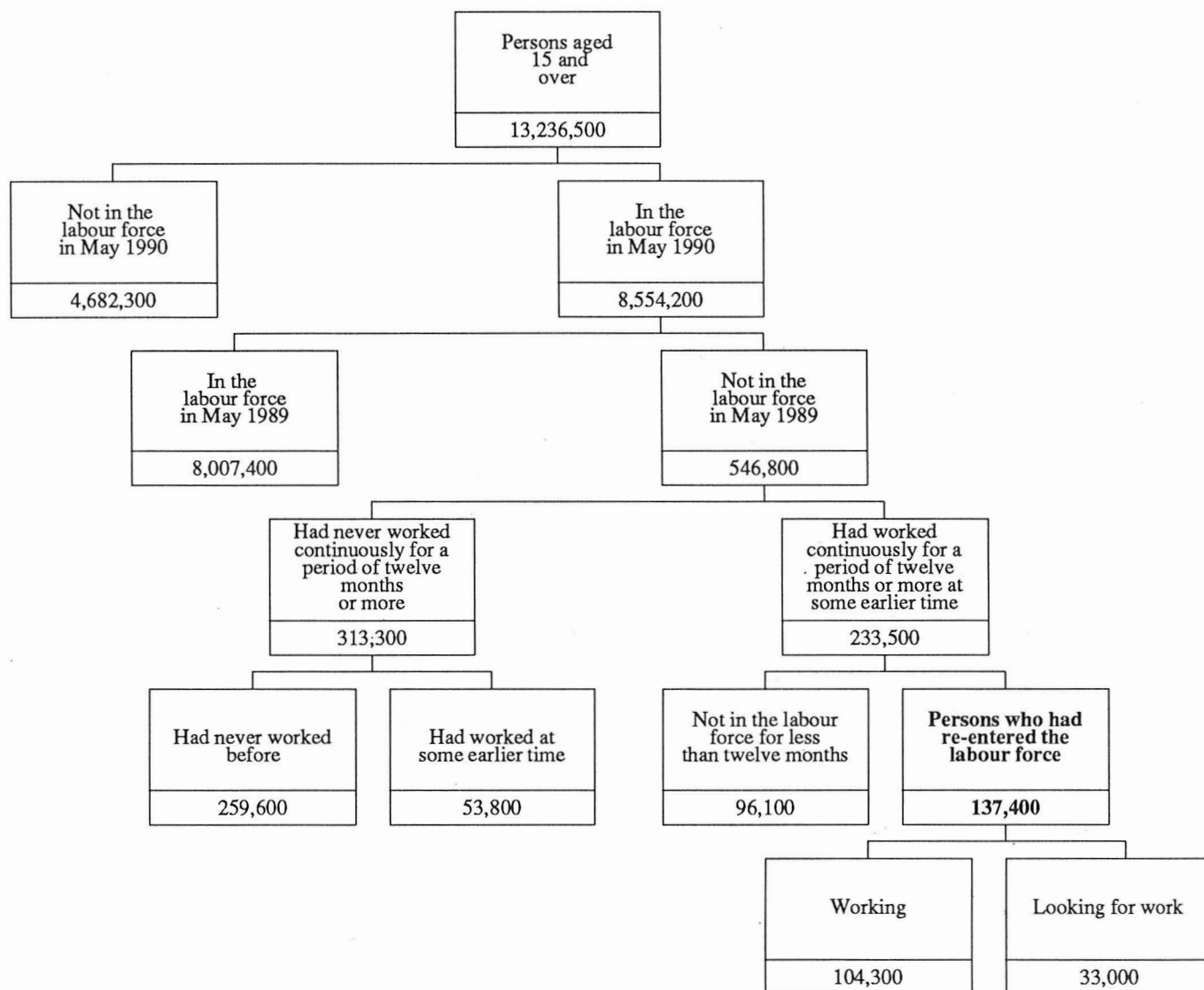
Refer to page 18 which specifies the variables, categories and populations that relate to the survey.  
An order form for special tables is included.

The population(s) for a particular variable refers to the persons in the survey to whom the variable relates.

## SUMMARY OF FINDINGS

**NOTE:** In this publication, the term persons who had re-entered the labour force, refers to persons who were in the labour force at May 1990, had a period not in the labour force of at least twelve months duration that finished within the last twelve months and had worked continuously for at least twelve months at some earlier time.

**DIAGRAM 1: PERSONS AGED 15 AND OVER: SUMMARY OF LABOUR FORCE ACTIVITY AND WHETHER RE-ENTERED THE LABOUR FORCE, MAY 1990**



Source: Table 1

In May 1990 the Australian civilian population aged 15 and over was estimated as 13,236,500 persons. Of these persons, 4,682,300 (35%) were not in the labour force and 8,554,200 (65%) were in the labour force. Some 546,800 persons were not in the labour force in May 1989, and of these 313,300 had never worked continuously for a period of twelve months or more (Table 1 and Diagram 1).

Of the 233,500 persons who had worked continuously for a period of twelve months or more 137,400 persons (59%) had been out of the labour force for a period of twelve

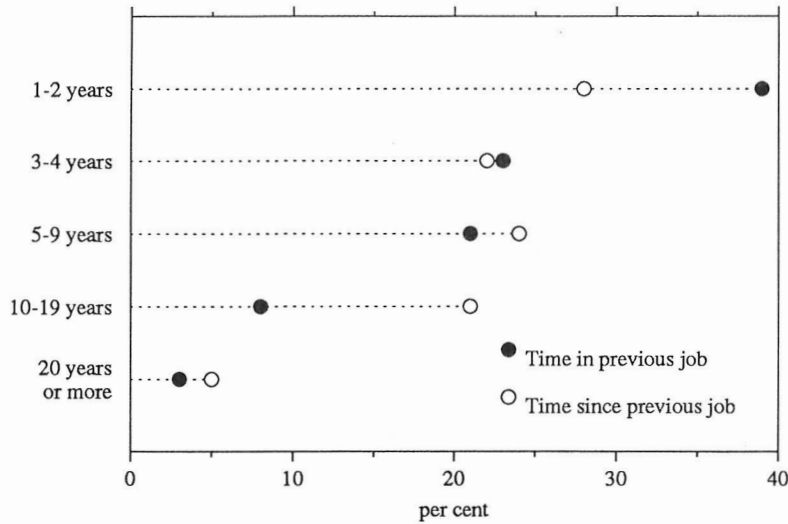
months or more. This group is defined as persons who had re-entered the labour force (Table 1 and Diagram 1).

An estimated 2 per cent of persons in the labour force at May 1990 had re-entered the labour force within the last twelve months.

#### Persons who had re-entered the labour force

Females accounted for 85 per cent of the total re-entrant population (Table 2).

**DIAGRAM 2: PERSONS WHO HAD RE-ENTERED THE LABOUR FORCE  
COMPARISON OF TIME IN PREVIOUS JOB AND TIME SINCE PREVIOUS  
JOB, MAY 1990**



Source: Table 2

Of the total number of persons who had re-entered the labour force, 89,800 females (65% of all re-entrants) were working at May 1990 and a further 27,400 females (20% of all re-entrants) were looking for work (Table 2).

For an estimated 38,800 (28%) re-entrants, the time since their previous job was 1 to 2 years. For 50 per cent of re-entrants, it had been 5 years or longer since they had ceased their previous job (Diagram 2).

Some 50,300 (37% of all re-entrants) whose previous job was less than 20 years ago had spent 1 to 2 years in that job, while 4,800 (4%) had spent 20 years or more in their previous job (Diagram 2).

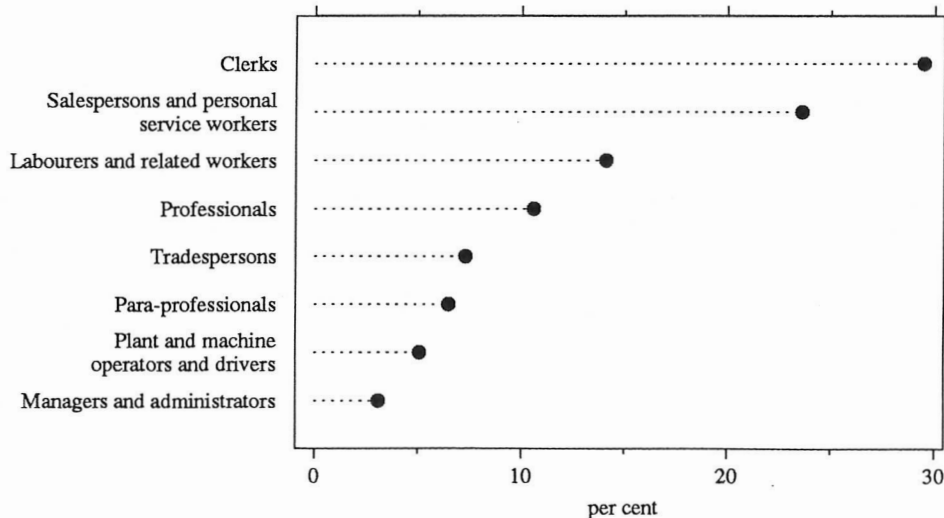
A majority of re-entrants (58%) reported "financial reasons" as the main reason for wanting to work again, with an additional 13 per cent reporting "boredom or they needed another interest" (Table 3).

Some 41 per cent of re-entrants reported that their time spent out of the labour force since their previous job was less than 3 years and a further 20 per cent reported 3 to 4 years (Table 3).

Of the 90,700 (66%) re-entrants who had looked for work in the last 12 months, 60 per cent reported no difficulties in finding work (Table 3).

For those persons whose previous job was less than twenty years ago, 30 per cent had previously worked as Clerks, 24 per cent were Salespersons and personal service workers and a further 14 per cent worked as Labourers and related workers (Diagram 3).

**DIAGRAM 3: PERSONS WHO HAD RE-ENTERED THE LABOUR FORCE  
AND WHO CEASED THEIR PREVIOUS JOB LESS THAN TWENTY  
YEARS AGO: OCCUPATION IN PREVIOUS JOB, MAY 1990**



Source: Table 6

Persons who were in the labour force in May 1990 but were not in the labour force twelve months ago and had never worked for a period of twelve months or more

Of the estimated 313,300 persons in this category:

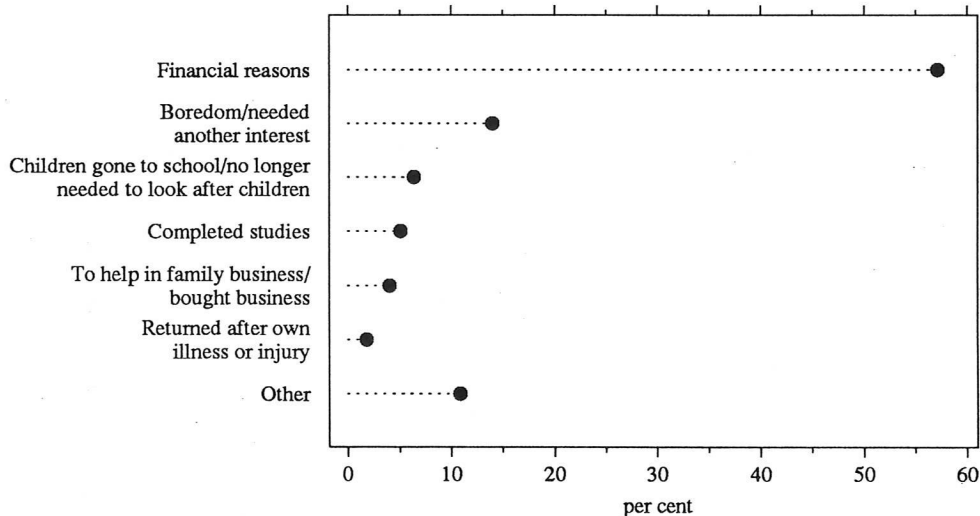
- 52 per cent were females;
- 92 per cent were aged between 15 and 24 years;
- 90 per cent were attending an educational institution before working; and
- 57 per cent had no post-school qualifications (Table 4).

Persons who were in the labour force in May 1990, but were not in the labour force twelve months ago and had worked continuously for a period of twelve months or more at some earlier time

Of the estimated 233,500 persons in this category:

- 79 per cent were female;
- 41 per cent were aged between 25 to 34 years;
- 52 per cent had no post-school qualifications;
- 44 per cent held their previous job 1 to 2 years ago; and
- 59 per cent returned to work for financial reasons (Tables 4 and 5).

DIAGRAM 4: PERSONS WHO HAD RE-ENTERED THE LABOUR FORCE AND WERE WORKING AS EMPLOYEES: MAIN REASON FOR WANTING TO WORK AGAIN, MAY 1990



Source: Table 7

#### Persons who had re-entered the labour force and were working as employees

Of the estimated 82,200 persons who had re-entered the labour force and were working as employees, 69 per cent were working part time (Table 7).

Diagram 4 shows that "Financial reasons" was the main reason for wanting to work again for 58 per cent of employees who had re-entered the labour force.

To gain their jobs, 50,700 (62%) of re-entrant employees approached their employer for work and just over half reported that they had no prior knowledge that a job was available. Some 36 per cent were approached by an employer for work (Table 7).



TABLE 1. PERSONS AGED 15 AND OVER: SUMMARY OF LABOUR FORCE ACTIVITY AND WHETHER HAD RE-ENTERED THE LABOUR FORCE, MAY 1985, MAY 1987 AND MAY 1990 ('000)

Summary of labour force activity and whether had re-entered the labour force	May 1985		May 1987		May 1990		
	Males	Females	Males	Females	Males	Females	Persons
Persons aged 15 and over	5,871.3	6,056.1	6,127.6	6,313.3	6,533.1	6,703.4	13,236.5
Not in the labour force in May	1,402.2	3,205.6	1,482.0	3,160.4	1,551.4	3,130.3	4,682.3
In the labour force in May	4,469.1	2,850.5	4,645.6	3,152.9	4,981.1	3,573.1	8,554.2
In the labour force twelve months ago	..	..	4,467.9	2,832.2	4,779.4	3,228.0	8,007.4
Not in the labour force twelve months ago	..	..	177.7	320.7	201.7	345.1	546.8
Had never worked continuously for a period of twelve months or more	..	..	137.2	160.7	151.5	161.8	313.3
Had never worked before	..	..	120.7	134.2	127.2	132.4	259.6
Had worked at some earlier time	..	..	16.5	26.4	24.3	29.4	53.8
Had worked continuously for a period of twelve months or more at some earlier time	..	..	40.5	160.1	50.2	183.2	233.5
Not in the labour force for less than twelve months	..	..	16.5	29.3	30.1	66.1	96.1
Working in May	..	..	14.8	26.3	25.3	55.4	80.7
Looking for work in May	..	..	*	*	4.8	10.7	15.5
Persons who had re-entered the labour force	20.3	136.5	24.0	130.8	20.2	117.2	137.4
Working in May	14.6	97.3	17.0	95.4	14.6	89.8	104.3
Looking for work in May	5.7	39.3	7.0	35.4	5.6	27.4	33.0

TABLE 2. PERSONS WHO HAD RE-ENTERED THE LABOUR FORCE : AGE, BIRTHPLACE AND PERIOD OF ARRIVAL, SELECTED DETAILS OF PREVIOUS JOB AND WHETHER WORKING OR LOOKING FOR WORK, MAY 1990 ('000)

	Total Males	Females		Persons			Total
		Working	Looking for work	Total	Working	Looking for work	
Age—							
15 — 24	* 3.1	6.2	* 3.4	9.7	8.7	4.0	12.7
25 — 34	5.9	38.3	11.7	50.0	41.7	14.2	55.9
35 — 44	4.0	31.7	8.7	40.4	34.9	9.5	44.4
45 — 54	* 2.7	9.3	* 2.5	11.9	11.4	* 3.1	14.6
55 and over	4.5	4.2	* 1.1	5.3	7.6	* 2.2	9.8
Birthplace and period of arrival—							
Born in Australia	14.9	70.1	19.3	89.4	80.6	23.8	104.3
Born outside Australia	5.2	19.7	8.1	27.8	23.8	9.2	33.0
Arrived before 1971	* 3.3	7.3	* 3.0	10.3	10.2	* 3.4	13.6
Arrived 1971-1980	* 0.8	6.7	* 2.1	8.8	7.0	* 2.6	9.6
Arrived 1981-1990	* 1.1	5.7	* 3.0	8.7	6.6	* 3.2	9.8
Main English speaking countries(a)	* 2.6	10.9	* 3.4	14.3	13.3	3.5	16.9
Other countries(b)	* 2.6	8.8	4.7	13.5	10.5	5.7	16.2
Full-time or part-time worker in previous job—							
Previous job less than 20 years ago	20.2	84.8	25.8	110.6	99.4	31.4	130.7
Full-time	18.1	66.3	21.8	88.1	79.0	27.2	106.2
Part-time	* 1.8	16.7	3.9	20.6	18.3	4.1	22.4
Varied/did not know	* 0.3	* 1.8	* 0.1	* 1.9	* 2.1	* 0.1	* 2.1
Previous job 20 or more years ago	* 0.0	5.0	* 1.7	6.6	5.0	* 1.7	6.6
Time in previous job—							
Previous job less than 20 years ago	20.2	84.8	25.8	110.6	99.4	31.4	130.7
Less than 1 year	* 0.3	* 2.3	* 0.8	* 3.1	* 2.5	* 0.9	* 3.4
1-2 years	6.6	32.6	11.1	43.7	36.9	13.4	50.3
3-9 years	6.9	43.4	11.1	54.4	48.6	12.7	61.3
3-4 years	* 3.2	23.3	5.6	28.9	25.4	6.7	32.1
5-9 years	3.7	20.1	5.5	25.6	23.2	6.1	29.3
10 years or more	6.4	6.5	* 2.9	9.3	11.5	4.3	15.7
10-19 years	* 2.7	6.0	* 2.2	8.2	8.2	* 2.7	10.9
20 years or more	3.7	* 0.5	* 0.6	* 1.1	* 3.2	* 1.6	4.8
Previous job 20 or more years ago	* 0.0	5.0	* 1.7	6.6	5.0	* 1.7	6.6
Time since previous job—							
1-2 years	8.6	23.7	6.4	30.2	30.2	8.6	38.8
3-9 years	9.8	41.2	12.5	53.7	48.2	15.4	63.5
3-4 years	5.5	17.7	7.0	24.7	21.5	8.7	30.2
5-9 years	4.4	23.5	5.5	29.0	26.6	6.7	33.4
10 years or more	* 1.7	24.8	8.5	33.3	26.0	9.1	35.0
10-19 years	* 1.7	19.9	6.8	26.7	21.0	7.4	28.4
20 years or more	* 0.0	5.0	* 1.7	6.6	5.0	* 1.7	6.6
Total	20.2	89.8	27.4	117.2	104.3	33.0	137.4

(a) Comprises United Kingdom, Ireland, Canada, South Africa, USA and New Zealand. (b) Includes persons born at sea.

TABLE 3. PERSONS WHO HAD RE-ENTERED THE LABOUR FORCE : JOB SEARCH EXPERIENCE AND OTHER RELATED CHARACTERISTICS AND WHETHER WORKING OR LOOKING FOR WORK, MAY 1990  
(<sup>'000</sup>)

	Total Males	Females			Persons		
		Working	Looking for work	Total	Working	Looking for work	Total
<i>Main reason for wanting to work again—</i>							
Completed studies	* 2.4	* 2.2	* 0.0	* 2.2	4.2	* 0.4	4.6
Financial reasons	10.2	48.2	20.9	69.2	55.3	24.1	79.4
Returned after own illness or injury	* 3.0	* 0.9	* 0.0	* 0.9	* 2.5	* 1.4	3.9
Children gone to school/no longer needed to look after children	* 0.0	6.3	* 2.3	8.7	6.3	* 2.3	8.7
Boredom/needed another interest	* 1.2	13.6	3.5	17.1	14.3	4.0	18.3
To help in family business/bought business	* 0.1	11.0	* 0.2	11.3	11.2	* 0.2	11.4
Other	8.6	10.5	* 0.4	10.9	17.2	* 2.3	19.6
<i>Time spent not in the labour force since previous job—</i>							
Under 12 months	* 1.3	5.1	* 1.1	6.2	6.4	* 1.1	7.5
1-2 years	10.4	30.0	8.9	38.9	37.0	12.3	49.3
3-9 years	7.9	33.8	11.2	44.9	39.8	13.0	52.8
3-4 years	5.8	15.9	6.1	21.9	20.0	7.8	27.7
5-9 years	* 2.1	17.9	5.1	23.0	19.8	5.3	25.1
10 years or more	* 0.6	20.9	6.3	27.2	21.1	6.6	27.8
10-19 years	* 0.6	16.8	5.0	21.8	17.1	5.3	22.4
20 years or more	* 0.0	4.0	* 1.3	5.4	4.0	* 1.3	5.4
<i>Active steps taken to find work during the last twelve months—</i>							
Had looked for work	15.1	48.2	27.4	75.6	57.7	33.0	90.7
Registered with CES	7.3	10.7	10.6	21.2	15.0	13.5	28.5
Took no other active steps	* 0.1	* 0.3	* 0.0	* 0.3	* 0.4	* 0.0	* 0.4
Contacted prospective employers	6.1	9.6	9.1	18.7	13.1	11.8	24.9
Took other active steps	* 1.0	* 0.8	* 1.4	* 2.2	* 1.6	* 1.7	* 3.3
Not registered with CES	7.8	37.5	16.9	54.4	42.7	19.5	62.2
Took only inactive steps	* 0.5	* 1.8	* 2.1	3.9	* 2.0	* 2.4	4.4
Contacted prospective employers	5.8	29.4	13.0	42.3	33.5	14.6	48.1
Took other active steps	* 1.5	6.3	* 1.8	8.1	7.2	* 2.5	9.7
Had not looked for work	5.1	41.6	* 0.0	41.6	46.7	* 0.0	46.7
<i>Main difficulty in finding work during the last twelve months—</i>							
Had looked for work	15.1	48.2	27.4	75.6	57.7	33.0	90.7
Own ill health or disability	* 3.0	* 0.2	* 1.3	* 1.5	* 1.7	* 2.8	4.5
Considered too young or too old by employers	* 1.6	* 1.1	* 1.9	* 3.0	* 2.3	* 2.3	4.6
Unsuitable hours	* 0.0	* 1.6	* 3.1	4.7	* 1.6	* 3.1	4.7
No vacancies in line of work	* 1.4	* 2.3	* 2.2	4.5	* 3.3	* 2.7	5.9
Other difficulties(a)	* 1.8	4.8	10.2	15.0	5.2	11.6	16.8
No difficulties at all	7.2	38.2	8.6	46.8	43.6	10.5	54.1
Had not looked for work	5.1	41.6	* 0.0	41.6	46.7	* 0.0	46.7
<b>Total</b>	<b>20.2</b>	<b>89.8</b>	<b>27.4</b>	<b>117.2</b>	<b>104.3</b>	<b>33.0</b>	<b>137.4</b>

(a) Includes too far to travel/transport problems; language difficulties; difficulties with ethnic background; lacked necessary skills/education; insufficient work experience; and no vacancies at all.

TABLE 4. PERSONS WHO WERE IN THE LABOUR FORCE IN MAY 1990 BUT WERE NOT IN THE LABOUR FORCE TWELVE MONTHS AGO : SELECTED CHARACTERISTICS, WHETHER WORKED CONTINUOUSLY FOR A PERIOD OF TWELVE MONTHS OR MORE AT SOME EARLIER TIME AND WHETHER NOT IN THE LABOUR FORCE FOR A PERIOD OF TWELVE MONTHS OR MORE, MAY 1990 ('000)

	<i>Had never worked continuously for a period of twelve months or more</i>			<i>Had worked continuously for a period of twelve months or more at some earlier time</i>			<i>Total</i>	<i>Total</i>
	<i>Had never worked before</i>	<i>Had worked at some earlier time</i>	<i>Total</i>	<i>Not in labour force for less than twelve months</i>	<i>Persons who had re-entered the labour force</i>	<i>Total</i>		
FEMALES								
<i>Age—</i>								
15 — 24	118.1	21.9	140.0	13.0	9.7	22.7	162.7	
25 — 34	6.5	5.3	11.8	31.4	50.0	81.4	93.2	
35 — 44	4.8	* 1.7	6.5	13.8	40.4	54.2	60.8	
45 — 54	* 1.6	* 0.2	* 1.9	6.1	11.9	18.0	19.9	
55 and over	* 1.3	* 0.3	* 1.6	* 1.7	5.3	7.0	8.6	
<i>Family status—</i>								
Member of a family(a)	115.9	20.3	136.2	55.4	107.0	162.4	298.6	
Husband or wife	11.2	7.0	18.3	44.3	90.4	134.7	153.0	
With dependents present	7.2	5.6	12.9	33.1	74.2	107.3	120.2	
Without dependents present	4.0	* 1.4	5.4	11.3	16.2	27.5	32.8	
Other family head	4.1	* 2.5	6.6	4.0	12.8	16.7	23.3	
Full-time student aged 15-24(b)	59.5	3.6	63.1	* 1.3	* 0.3	* 1.6	64.7	
Other child(c) of married couple or family head	38.7	6.6	45.3	4.7	* 2.8	7.5	52.8	
Other relative of married couple or family head	* 2.3	* 0.5	* 2.8	* 1.1	* 0.8	* 1.9	4.7	
Not a member of a family	9.4	8.3	17.6	7.5	4.0	11.4	29.1	
Living alone	* 1.5	* 1.1	* 2.6	* 2.3	* 3.0	5.3	7.9	
Not living alone	7.8	7.2	15.0	5.2	* 1.0	6.2	21.2	
Family status not determined	7.1	* 0.9	8.0	* 3.2	6.2	9.4	17.4	
<i>Birthplace and period of arrival—</i>								
Born in Australia	110.9	24.3	135.1	51.2	89.4	140.6	275.7	
Born outside Australia	21.5	5.2	26.7	14.9	27.8	42.7	69.4	
Arrived before 1971	* 2.2	* 1.5	3.8	6.3	10.3	16.6	20.3	
Arrived 1971-1980	5.6	* 2.3	7.9	* 2.5	8.8	11.3	19.2	
Arrived 1981-1990	13.6	* 1.4	15.0	6.1	8.7	14.8	29.9	
Main English speaking countries(d)	6.9	* 2.5	9.4	8.7	14.3	23.0	32.4	
Other countries(e)	14.6	* 2.7	17.3	6.1	13.5	19.7	37.0	
<i>Educational attainment at May 1990—</i>								
With post-school qualifications	12.9	9.7	22.7	34.8	51.6	86.4	109.0	
Degree	4.8	4.2	9.0	7.7	9.2	16.8	25.8	
Trade qualification or apprenticeship	* 0.2	* 0.0	* 0.2	* 1.2	* 2.3	3.5	3.7	
Certificate or diploma	7.9	5.5	13.3	25.6	39.0	64.6	77.9	
Other	* 0.1	* 0.1	* 0.2	* 0.3	* 1.1	* 1.5	* 1.7	
Without post-school qualifications(f)	68.1	18.5	86.5	31.0	65.6	96.6	183.2	
Attended highest level of secondary school available	38.2	10.7	48.9	10.8	16.3	27.1	76.1	
Did not attend highest level of secondary school available	29.8	7.3	37.1	19.6	47.7	67.2	104.3	
Still at school	51.4	* 1.2	52.6	* 0.3	* 0.0	* 0.3	52.9	
<i>Main activity before working—</i>								
Retired/voluntarily inactive	* 0.2	* 0.4	* 0.6	* 2.0	* 1.4	* 3.4	4.0	
Attending an educational institution	117.6	16.3	134.0	8.6	6.2	14.8	148.7	
Home duties/child care	13.5	9.6	23.1	41.2	102.1	143.3	166.4	
Own illness/injury; own disability/handicap	* 0.2	* 0.5	* 0.8	* 2.4	3.9	6.3	7.0	
Travelled/moved house/holiday	* 0.6	* 2.0	* 2.6	10.3	* 2.1	12.4	15.0	
Other(g)	* 0.1	* 0.6	* 0.7	* 1.6	* 1.6	* 3.2	3.9	
<i>Whether working or looking for work at May 1990—</i>								
Working	92.3	21.5	113.8	55.4	89.8	145.1	258.9	
Looking for work	40.1	7.9	48.0	10.7	27.4	38.1	86.1	
<i>Total</i>	<i>132.4</i>	<i>29.4</i>	<i>161.8</i>	<i>66.1</i>	<i>117.2</i>	<i>183.3</i>	<i>345.1</i>	

TABLE 4. PERSONS WHO WERE IN THE LABOUR FORCE IN MAY 1990 BUT WERE NOT IN THE LABOUR FORCE TWELVE MONTHS AGO : SELECTED CHARACTERISTICS, WHETHER WORKED CONTINUOUSLY FOR A PERIOD OF TWELVE MONTHS OR MORE AT SOME EARLIER TIME AND WHETHER NOT IN THE LABOUR FORCE FOR A PERIOD OF TWELVE MONTHS OR MORE, MAY 1990  
(<sup>'000</sup>) —continued

	<i>Had never worked continuously for a period of twelve months or more</i>			<i>Had worked continuously for a period of twelve months or more at some earlier time</i>		<i>Total</i>	<i>Total</i>
	<i>Had never worked before</i>	<i>Had worked at some earlier time</i>	<i>Total</i>	<i>Not in labour force for less than twelve months</i>	<i>Persons who had re-entered the labour force</i>		
PERSONS							
<i>Age—</i>							
15 — 24	242.3	44.8	287.1	23.2	12.7	35.9	323.0
25 — 34	8.2	6.6	14.9	39.9	55.9	95.7	110.6
35 — 44	5.5	* 1.8	7.4	17.6	44.4	62.0	69.3
45 — 54	* 2.2	* 0.2	* 2.4	10.4	14.6	25.0	27.4
55 and over	* 1.3	* 0.3	* 1.6	5.1	9.8	14.9	16.4
<i>Family status—</i>							
Member of a family(a)	229.9	37.7	267.5	74.7	121.0	195.7	463.3
Husband or wife	12.9	8.3	21.2	56.0	99.4	155.4	176.6
With dependents present	8.0	5.9	13.9	37.3	77.3	114.6	128.5
Without dependents present	4.9	* 2.4	7.3	18.7	22.1	40.8	48.1
Other family head	4.1	* 2.5	6.6	4.8	13.9	18.6	25.2
Full-time student aged 15-24(b)	109.9	11.6	121.5	* 2.2	* 1.0	* 3.2	124.7
Other child(c) of married couple or family head	98.2	14.5	112.8	9.9	5.7	15.6	128.4
Other relative of married couple or family head	4.6	* 0.8	5.4	* 1.8	* 0.9	* 2.8	8.2
Not a member of a family	17.2	14.0	31.3	16.2	8.9	25.2	56.4
Living alone	* 2.4	* 1.7	4.1	4.3	5.3	9.6	13.7
Not living alone	14.8	12.4	27.2	12.0	3.6	15.6	42.7
Family status not determined	12.5	* 2.1	14.5	5.2	7.4	12.6	27.1
<i>Birthplace and period of arrival—</i>							
Born in Australia	222.8	44.4	267.2	73.6	104.3	177.9	445.1
Born outside Australia	36.7	9.4	46.2	22.5	33.0	55.5	101.7
Arrived before 1971	* 2.9	* 1.9	4.7	9.5	13.6	23.1	27.9
Arrived 1971-1980	12.5	3.7	16.2	4.0	9.6	13.6	29.8
Arrived 1981-1990	21.4	3.8	25.2	9.0	9.8	18.8	44.1
Main English speaking countries(d)	12.9	5.5	18.4	12.0	16.9	28.9	47.3
Other countries(e)	23.9	3.9	27.8	10.5	16.2	26.7	54.4
<i>Educational attainment at May 1990—</i>							
With post-school qualifications	21.2	14.8	36.0	50.0	61.2	111.2	147.3
Degree	9.8	7.7	17.5	11.8	11.4	23.2	40.6
Trade qualification or apprenticeship	* 0.9	* 0.0	* 0.9	7.3	6.4	13.7	14.5
Certificate or diploma	10.5	7.0	17.5	30.4	42.2	72.6	90.0
Other	* 0.1	* 0.1	* 0.2	* 0.6	* 1.3	* 1.8	* 2.0
Without post-school qualifications(f)	145.0	34.5	179.5	45.6	76.0	121.5	301.0
Attended highest level of secondary school available	72.6	23.4	96.1	17.9	19.7	37.7	133.7
Did not attend highest level of secondary school available	72.3	10.4	82.8	26.4	52.7	79.1	161.8
Still at school	93.3	4.5	97.8	* 0.5	* 0.2	* 0.7	98.5
<i>Main activity before working—</i>							
Retired/voluntarily inactive	* 1.3	* 0.4	* 1.7	6.8	4.9	11.6	13.4
Attending an educational institution	242.5	38.3	280.8	17.5	12.3	29.8	310.6
Home duties/child care	13.5	9.6	23.1	42.4	103.4	145.9	169.0
Own illness/injury; own disability/handicap	* 0.9	* 0.6	* 1.5	7.1	10.0	17.0	18.5
Travelled/moved house/holiday	* 1.1	* 2.8	3.9	16.8	* 3.2	20.1	24.0
Other(g)	* 0.3	* 2.0	* 2.3	5.5	3.6	9.1	11.4
<i>Whether working or looking for work at May 1990—</i>							
Working	180.8	40.7	221.5	80.7	104.3	185.0	406.5
Looking for work	78.7	13.1	91.8	15.5	33.0	48.5	140.3
<b>Total</b>	<b>259.6</b>	<b>53.8</b>	<b>313.3</b>	<b>96.1</b>	<b>137.4</b>	<b>233.5</b>	<b>546.8</b>

(a) Includes sole parents. (b) Excludes persons aged 20-24 attending school. (c) Aged 15 and over. (d) Comprises United Kingdom, Ireland, Canada, South Africa, USA and New Zealand. (e) Includes persons born at sea. (f) Includes persons who were not asked their educational qualifications; never attended school; and secondary school qualifications not determined. (g) Includes looked for work.

TABLE 5. PERSONS WHO WERE IN THE LABOUR FORCE IN MAY 1990 BUT WERE NOT IN THE LABOUR FORCE TWELVE MONTHS AGO AND HAD WORKED CONTINUOUSLY FOR A PERIOD OF TWELVE MONTHS OR MORE AT SOME EARLIER TIME : SELECTED CHARACTERISTICS AND WHETHER NOT IN THE LABOUR FORCE FOR A PERIOD OF TWELVE MONTHS OR MORE, MAY 1990 ('000)

	<i>Whether not in labour force for a period of twelve months or more</i>		<i>Males</i>	<i>Females</i>	<i>Persons</i>
	<i>Not in labour force for less than twelve months</i>	<i>Persons who had re-entered the labour force</i>			
<i>Time since previous job—</i>					
1-2 years	64.3	38.8	30.0	73.0	103.0
3-9 years	24.1	63.5	17.9	69.7	87.6
3-4 years	14.8	30.2	10.9	34.0	45.0
5-9 years	9.3	33.4	7.0	35.6	42.7
10 years or more	7.8	35.0	* 2.3	40.5	42.8
10-19 years	6.6	28.4	* 2.3	32.7	35.0
20 years or more	* 1.2	6.6	* 0.0	7.8	7.8
<i>Full-time or part-time worker in previous job—</i>					
Previous job less than 20 years ago(a)	94.9	130.7	50.2	175.5	225.7
Full-time	73.7	106.2	43.5	136.4	179.9
Part-time	20.0	22.4	6.5	35.9	42.4
Previous job 20 or more years ago	* 1.2	6.6	* 0.0	7.8	7.8
<i>Occupation in previous job—</i>					
Previous job less than 20 years ago	94.9	130.7	50.2	175.5	225.7
Managers and administrators	6.9	4.1	5.4	5.5	11.0
Professionals	13.0	13.8	6.0	20.8	26.8
Para-professionals	8.2	8.5	* 3.1	13.6	16.8
Tradespersons	7.7	9.6	11.2	6.1	17.3
Clerks	24.2	38.6	4.6	58.2	62.8
Salespersons and personal service workers	19.0	30.9	4.7	45.2	49.9
Plant and machine operators, and drivers	* 2.4	6.7	* 3.2	5.9	9.1
Labourers and related workers	13.6	18.4	11.9	20.1	32.0
Previous job 20 or more years ago	* 1.2	6.6	* 0.0	7.8	7.8
<i>Status of worker in previous job—</i>					
Previous job less than 20 years ago(b)	94.9	130.7	50.2	175.5	225.7
Employers	* 3.2	* 1.9	* 2.2	* 2.9	5.1
Self-employed	4.0	5.3	4.3	5.0	9.3
Wage and salary earners	87.1	123.6	43.4	167.2	210.6
Previous job more than 20 years ago	* 1.2	6.6	* 0.0	7.8	7.8
<i>Reason for ceasing previous job—</i>					
Job loser(c)	15.6	24.4	16.1	24.0	40.0
Retrenched	6.1	9.5	4.9	10.7	15.6
Own ill health or injury	6.9	12.2	10.1	9.0	19.1
Job leaver	80.5	113.0	34.1	159.3	193.4
Unsatisfactory work arrangements	8.3	5.2	4.4	9.0	13.5
Retired/did not want to work any longer	5.9	6.2	5.2	6.9	12.1
Returned to studies	11.1	7.4	9.2	9.3	18.5
To get married	* 2.4	9.7	* 0.3	11.8	12.1
Pregnancy/to have children	20.0	52.3	* 0.0	72.3	72.3
To look after family, house or someone else	* 3.3	5.2	* 0.3	8.1	8.4
To have holiday/to move house/spouse transferred	17.6	17.3	6.2	28.7	34.9
Other(d)	11.9	9.8	8.5	13.2	21.6
<i>Main reason for wanting to work again—</i>					
Completed studies	6.5	4.6	5.9	5.2	11.1
Financial reasons	58.9	79.4	28.7	109.6	138.3
Returned after own illness or injury	3.7	3.9	4.9	* 2.7	7.6
Children gone to school/no longer needed to look after children	* 2.2	8.7	* 0.0	10.9	10.9
Boredom/needed another interest	10.6	18.3	* 2.9	26.0	28.9
To help in family business/bought business	5.5	11.4	* 0.9	16.0	16.9
Other	18.8	19.6	17.6	20.7	38.4
<i>Whether working or looking for work at May 1990—</i>					
Working	80.7	104.3	39.8	145.1	185.0
Looking for work	15.5	33.0	10.4	38.1	48.5
<b>Total</b>	<b>96.1</b>	<b>137.4</b>	<b>50.2</b>	<b>183.3</b>	<b>233.5</b>

(a) Includes varied/did not know. (b) Includes unpaid voluntary workers and unpaid family helpers. (c) Includes job was temporary or seasonal and did not leave to return to studies; and business closed down for economic reasons. (d) Includes job was temporary or seasonal and left to return to studies; and business closed down for other reasons.

TABLE 6. PERSONS WHO HAD RE-ENTERED THE LABOUR FORCE : OCCUPATION IN PREVIOUS JOB, MAIN REASON FOR WANTING TO WORK AGAIN AND TIME SINCE PREVIOUS JOB, MAY 1990 ('000)

	Time since previous job (years)				10 or more	Total
	1-2	3-4	5-9	Total		
FEMALES						
<i>Occupation in previous job—</i>						
Previous job less than 20 years ago(a)	30.2	24.7	29.0	53.7	26.7	110.6
Professionals	4.4	* 1.3	3.5	4.9	* 2.4	11.7
Tradespersons	* 1.5	* 0.9	* 0.7	* 1.6	* 1.7	4.8
Clerks	7.4	8.6	10.3	18.9	10.7	36.9
Salespersons and personal service workers	8.2	6.3	8.3	14.6	7.1	29.9
Labourers and related workers	4.1	3.7	3.9	7.6	* 1.8	13.5
Previous job 20 or more years ago	* 0.0	* 0.0	* 0.0	* 0.0	6.6	6.6
<i>Main reason for wanting to work again—</i>						
Financial reasons	20.0	16.1	16.6	32.6	16.6	69.2
Children gone to school/no longer needed to look after children	* 1.1	* 0.8	* 2.1	* 2.9	4.6	8.7
Boredom/needed another interest	4.4	3.9	4.0	7.8	4.9	17.1
To help in family business/bought business	* 1.2	* 2.0	* 3.2	5.1	5.0	11.3
Other(b)	3.5	* 2.0	* 3.2	5.2	* 2.3	10.9
<i>Total</i>	30.2	24.7	29.0	53.7	33.3	117.2
PERSONS						
<i>Occupation in previous job—</i>						
Previous job less than 20 years ago(a)	38.8	30.2	33.4	63.5	28.4	130.7
Professionals	4.9	* 2.2	4.4	6.6	* 2.4	13.8
Tradespersons	* 3.2	* 2.3	* 1.6	3.9	* 2.4	9.6
Clerks	7.9	9.0	10.9	19.9	10.8	38.6
Salespersons and personal service workers	8.9	6.3	8.3	14.7	7.4	30.9
Labourers and related workers	6.5	4.9	5.2	10.0	* 1.9	18.4
Previous job 20 or more years ago	* 0.0	* 0.0	* 0.0	* 0.0	6.6	6.6
<i>Main reason for wanting to work again—</i>						
Financial reasons	23.6	19.0	19.4	38.4	17.4	79.4
Children gone to school/no longer needed to look after children	* 1.1	* 0.8	* 2.1	* 2.9	4.6	8.7
Boredom/needed another interest	5.0	4.0	4.0	8.0	5.3	18.3
To help in family business/bought business	* 1.2	* 2.0	* 3.3	5.3	5.0	11.4
Other(b)	7.9	4.4	4.5	9.0	* 2.7	19.6
<i>Total</i>	38.8	30.2	33.4	63.5	35.0	137.4

(a) Includes Managers and administrators; Para-professionals; and Plant and machine operators, and drivers. (b) Includes completed studies; and returned after own illness or injury.

TABLE 7. PERSONS WHO HAD RE-ENTERED THE LABOUR FORCE AND WERE WORKING AS EMPLOYEES : MAIN REASON FOR WANTING TO WORK AGAIN, METHOD OF JOB ATTAINMENT AND FULL-TIME AND PART-TIME WORKERS, MAY 1990 ('000)

	Full-time and part-time workers in May 1990		Total
	Full-time workers	Part-time workers	
FEMALES			
<i>Main reason for wanting to work again—</i>			
Completed studies	* 2.2	* 0.0	* 2.2
Financial reasons	11.6	29.9	41.5
Returned after own illness or injury	* 0.6	* 0.2	* 0.9
Children gone to school/no longer needed to look after children	* 0.4	4.9	5.3
Boredom/needed another interest	* 1.1	10.1	11.2
To help in family business/bought business	* 0.9	* 2.4	* 3.3
Other	4.7	4.9	9.6
<i>Method of job attainment—</i>			
Jobseeker approached employer	13.2	29.6	42.8
Had no prior knowledge that job was available	5.8	16.2	22.0
First step taken —			
Contacted likely employers	3.7	10.4	14.0
Other(a)	* 2.2	5.8	8.0
Had prior knowledge that job was available	7.3	13.4	20.8
Through newspaper advertisements	3.5	4.8	8.3
Through friends/relatives/company contacts	* 2.4	6.9	9.2
Other(b)	* 1.5	* 1.8	* 3.3
Employer approached jobseeker	4.6	21.8	26.4
Not asked (payment in kind)	* 1.0	* 0.8	* 1.9
<b>Total</b>	<b>18.8</b>	<b>52.3</b>	<b>71.1</b>
PERSONS			
<i>Main reason for wanting to work again—</i>			
Completed studies	4.2	* 0.0	4.2
Financial reasons	14.7	32.7	47.4
Returned after own illness or injury	* 1.1	* 0.4	* 1.5
Children gone to school/no longer needed to look after children	* 0.4	4.9	5.3
Boredom/needed another interest	* 1.3	10.2	11.5
To help in family business/bought business	* 0.9	* 2.4	* 3.3
Other	8.4	6.2	14.6
<i>Method of job attainment—</i>			
Jobseeker approached employer	18.8	32.0	50.7
Had no prior knowledge that job was available	8.5	17.7	26.1
First step taken —			
Contacted likely employers	5.6	11.5	17.1
Other(a)	* 2.9	6.2	9.0
Had prior knowledge that job was available	10.3	14.3	24.6
Through newspaper advertisements	4.5	5.2	9.6
Through friends/relatives/company contacts	3.7	7.1	10.8
Other(b)	* 2.2	* 2.0	4.2
Employer approached jobseeker	5.8	23.7	29.5
Not asked (payment in kind)	* 1.2	* 0.8	* 2.0
<b>Total</b>	<b>25.7</b>	<b>56.5</b>	<b>82.2</b>

(a) Includes tendered/advertised for work. (b) Includes through CES; through private employment agency; and through welfare agency or organisation.

TABLE 8. ALL POPULATIONS BY STATE  
('000)

	<i>New South Wales</i>	<i>Victoria</i>	<i>Queensland</i>	<i>South Australia</i>	<i>Western Australia</i>	<i>Tasmania</i>	<i>Northern Territory</i>	<i>Australian Capital Territory</i>	<i>Australia</i>
<i>Population 1 :</i> Persons aged 15 and over	4,521.6	3,420.2	2,235.4	1,136.8	1,251.9	350.0	110.3	210.4	13,236.5
<i>Population 2 :</i> Persons who were in the labour force at May 1990 but were not in the labour force twelve months ago	175.6	135.6	104.0	42.6	55.7	13.0	6.2	14.1	546.8
<i>Population 3 :</i> Persons who were in the labour force at May 1990 but were not in the labour force twelve months ago and had never worked continuously for at least twelve months	103.2	81.8	55.6	23.6	29.1	8.2	3.7	8.1	313.3
<i>Population 4 :</i> Persons who were in the labour force at May 1990 but were not in the labour force twelve months ago and had never worked before	83.9	69.8	48.4	18.4	22.2	6.8	3.6	6.6	259.6
<i>Population 5 :</i> Persons who were in the labour force at May 1990 but were not in the labour force twelve months ago, had never worked continuously for at least twelve months but had worked at some earlier time	19.3	12.0	7.3	5.2	6.9	1.4	* 0.2	1.5	53.8
<i>Population 6 :</i> Persons who were in the labour force at May 1990 but were not in the labour force twelve months ago and had worked continuously for at least twelve months at some earlier time	72.4	53.7	48.4	19.1	26.6	4.8	2.5	6.0	233.5
<i>Population 7 :</i> Persons who were in the labour force at May 1990 but were not in the labour force twelve months ago, had worked continuously for at least twelve months at some earlier time and were out of the labour force for less than twelve months	30.1	22.0	20.3	6.9	11.0	1.6	* 1.2	3.1	96.1



TABLE 8. ALL POPULATIONS BY STATE  
('000) —continued

	<i>New South Wales</i>	<i>Victoria</i>	<i>Queensland</i>	<i>South Australia</i>	<i>Western Australia</i>	<i>Tasmania</i>	<i>Northern Territory</i>	<i>Australian Capital Territory</i>	<i>Australia</i>
<i>Population 8 :</i> Persons who had re-entered the labour force (ie. Persons who were in the labour force at May 1990, had a period not in the labour force of at least twelve months duration that finished within the last twelve months and had worked continuously for at least twelve months at some earlier time)	42.3	31.8	28.0	12.2	15.6	3.2	* 1.3	2.9	137.4
<i>Population 9 :</i> Persons who had re-entered the labour force and were working	33.2	24.3	20.4	8.6	11.9	2.6	* 0.9	2.5	104.3
<i>Population 10 :</i> Persons who had re-entered the labour force and were looking for work	9.2	7.5	7.7	3.6	3.6	* 0.7	* 0.5	* 0.3	33.0
<i>Population 11 :</i> Persons who had re-entered the labour force and were working as employees	27.4	19.5	14.5	6.9	8.8	2.1	* 0.9	2.1	82.2

## EXPLANATORY NOTES

### Introduction

The monthly population survey (which is described in *The Labour Force, Australia* (6203.0)) comprises the monthly labour force survey and supplementary topics. This publication contains some results of a supplementary survey run in association with the May 1990 labour force survey conducted throughout Australia.

2. Of the respondents to the labour force survey, those who fell within the scope of the supplementary survey were asked additional questions. They were details of previous job, highest educational qualification gained since previous job, main activity while out of the labour force since previous job, main reason for wanting to work again and details of current job, if appropriate.

### Scope

3. The scope of this supplementary survey was the same as that used for the labour force survey (described in full in *The Labour Force, Australia* (6203.0)) except that it was restricted to persons who had entered or re-entered the labour force in the last twelve months.

### Coverage

4. In the population survey, coverage rules are applied which aim to ensure that each person is associated with only one dwelling, and hence has only one chance of selection. See *The Labour Force, Australia* (6203.0) for more details.

### Definitions

5. Further definitions of labour force and demographic classifications appearing in this publication are given in *The Labour Force, Australia* (6203.0).

6. Unless otherwise stated, all characteristics referenced in this publication relate to the week before the interview (i.e. the reference week).

### Results of the survey

7. Due to differences in the method of estimation used in this supplementary survey and that used in the labour force survey, there are some small variations between estimates in this publication and those in the corresponding issue of *The Labour Force, Australia* (6203.0).

8. Results of similar surveys, the first conducted in May 1985, have been given in previous issues of this publication. It is proposed that this survey will be conducted next in May 1993.

### Comparability of series

9. It is impracticable to obtain information relating to a long period of time which is strictly comparable with that obtained in the monthly labour force survey for which the reference period is one week. The definitions used in determining the labour force status of persons in the

monthly survey depend on a detailed set of questions asked about a person's labour force activity during the reference period. For the survey of persons who had re-entered the labour force a person is assigned to labour force categories at various points in time on the basis of a more limited set of questions. It is for this reason that the terms *worked* and *looked for work* are used in this survey rather than the rigidly defined terms *employed* and *unemployed* used in the monthly labour force survey.

### Reliability of the estimates

10. Estimates in this publication are subject to sampling and non-sampling errors. For further information refer to the Technical Note, page 15.

### Related publications

11. Other ABS publications which may be of interest include:

*The Labour Force, Australia* (6203.0)—issued monthly

*Labour Force Experience, Australia* (6206.0)—issued annually

*Labour Mobility, Australia* (6209.0)—issued annually

*Persons who have Left the Labour Force, Australia, April 1988* (6267.0)—issued irregularly

*Job Search Experience of Unemployed Persons, Australia, July 1988* (6222.0)—issued two-yearly

*Transition from Education to Work, Australia* (6227.0)—issued annually

*Successful and Unsuccessful Job Search Experience, Australia, June 1986* (6245.0)—issued irregularly

*Career paths of Qualified Nurses, Australia, March to July 1989* (6277.0)—issued irregularly

12. Current publications produced by the ABS are listed in the *Catalogue of Publications and Products, Australia* (1101.0). The ABS also issues, on Tuesdays and Fridays, a *Publications Advice* (1105.0) which lists publications to be released in the next few days. The Catalogue and Publications Advice are available from any ABS office.

### Symbols and other usages

- \* subject to sampling variability too high for most practical uses. See the Technical Note, page 15.
- .. not applicable.

13. Because estimates have been rounded, discrepancies may occur between sums of the component items and totals.

**Electronic services**

DISCOVERY. Key \*656# for selected current economic, social and demographic statistics.

AUSSTATS. Thousands of up-to-date time series are available on this ABS on-line service through PAXUS COMNET. For further information phone the AUSSTATS Help Desk on (06) 252 6017.

TELESTATS. This service provides:

- foreign trade statistics tailored to users' requirements. Further information is available on (06) 252 5404.
- text and tables for selected Main Economic Indicator publications. Further information is available on (06) 252 5405.

**Floppy disk service**

Selected ABS statistics are available on floppy disk. Further information is available on (06) 252 6684.

## TECHNICAL NOTE

### Estimation procedure

The estimates are derived from the population survey by use of a ratio estimation procedure, which ensures that the estimates conform to an independently estimated distribution of the population for each capital city and remainder of State by age and sex, rather than to the corresponding distribution within the sample itself.

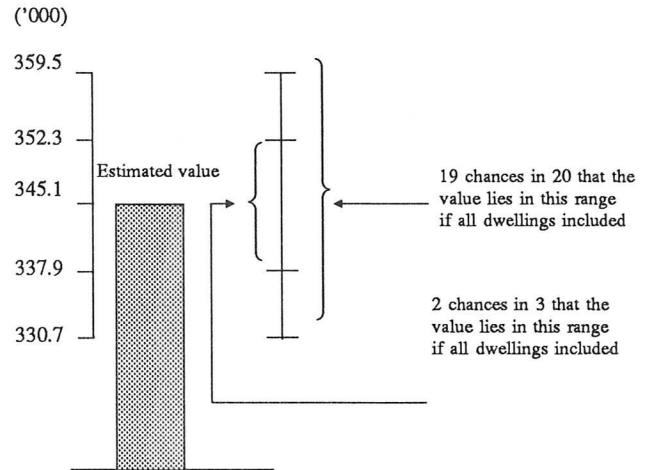
### Reliability of the estimates

2. Since the estimates in this publication are based on information obtained from occupants of a sample of dwellings, they are subject to sampling variability, that is, they may differ from those that would have been produced if all dwellings had been included in the survey. One measure of the likely difference is given by the *standard error*, which indicates the extent to which an estimate might have varied by chance because only a sample of dwellings was included. There are about two chances in three that a sample estimate will differ by less than one standard error from the number that would have been obtained if all dwellings had been included, and about nineteen chances in twenty that the difference will be less than two standard errors. Another measure of the likely difference is the *relative standard error*, which is obtained by expressing the standard error as a percentage of the estimate.

3. Space does not allow for the separate indication of the standard errors of all estimates in this publication. A table of standard errors for general application is given on the following page. Since they are averages based on calculations for a limited number of past surveys over a wide range of labour force characteristics these numbers will not give a precise measure of the standard error of a particular estimate but they will provide an indication of its magnitude.

4. An example of the calculation and the use of standard errors in relation to estimates of persons is as follows. Table 4 shows the estimated number of females aged 15 and over who were in the labour force in May 1990 but were not in the labour force twelve months ago was 345,100. Since this estimate is between 300,000 and 500,000 the standard error for Australia will be between 6,900 and 8,400 in the standard error table and can be approximated as 7,200 (rounded to the nearest 100). Therefore, there are about two chances in three that the value that would have been produced if all dwellings had been included in the survey will fall in the range 337,900 to 352,300 and about nineteen chances in twenty that the value will fall within the range 330,700 to 359,500. This example is illustrated in the following diagram.

5. As can be seen from the standard error table, *the smaller the estimate the higher is the relative standard error*. Very small estimates are thus subject to such high standard errors (relative to the size of the estimate) as to detract seriously from their value for most reasonable



uses. In the tables in this publication, only estimates with relative standard errors of 25 per cent or less and percentages based on such estimates are considered sufficiently reliable for most purposes. However, estimates and percentages with larger relative standard errors have been included and are preceded by an asterisk (e.g. \*3.4) to indicate they are subject to high standard errors and should be used with caution.

6. Proportions and percentages formed from the ratio of two estimates are also subject to sampling errors. The size of the error depends on the accuracy of both the numerator and the denominator. A formula to approximate the relative standard error (RSE) of a proportion is:

$$\text{RSE } (x/y) = \sqrt{[\text{RSE } (x)]^2 - [\text{RSE } (y)]^2}$$

7. Considering the example from paragraph 4 above, of the 345,100 females aged 15 and over who were in the labour force in May 1990 but were not in the labour force twelve months ago, only 69,400 or 20.1 per cent were born outside Australia. The standard error of 69,400 is approximately 3,600 so the relative standard error is 5.2 per cent. The relative standard error for 345,100 is 2.1 per cent. Applying the above formula, the relative standard error of the proportion is  $\sqrt{[(5.2)^2 - (2.1)^2]}$  or 4.8 per cent, giving a standard error for the proportion (20.1 per cent) of 1.0 percentage points. Therefore, there are about two chances in three that the proportion of females who were in the labour force in May 1990 but were not in the labour force twelve months ago was between 19.1 per cent and 21.1 per cent and nineteen chances in twenty the proportion was within the range 18.1 per cent to 22.1 per cent.

8. Published estimates may also be used to calculate the difference between two survey estimates (of numbers or percentages). Such an estimate is subject to sampling error. The sampling error of the difference between two estimates depends on their standard errors and the

relationship (correlation) between them. An approximate standard error (SE) of the difference between two estimates (x-y) may be calculated by the following formula:

$$SE (x-y) = \sqrt{[SE (x)]^2 + [SE (y)]^2}$$

While this formula will only be exact for differences between separate and uncorrelated characteristics or subpopulations it is expected to provide a good approximation for all differences likely to be of interest in this publication.

9. The imprecision due to sampling variability, which is measured by the standard error, should not be confused with inaccuracies that may occur because of imperfections in reporting by interviewers and respondents and errors made in coding and processing data. Inaccuracies of this kind are referred to as the *non-sampling error*, and they may occur in any enumeration, whether it be a full count or a sample. Every effort is made to reduce the non-sampling error to a minimum by careful design of questionnaires, intensive training and supervision of interviewers and efficient operating procedures.

#### STANDARD ERRORS OF ESTIMATES

Size of estimate (Persons)	NSW	Vic.	Qld	SA	WA	Tas.	NT	ACT	Australia	
	— number —									Relative standard error (per cent)
100			130	110	120	80	130	100	120	117.6
200	230	230	190	160	180	120	170	140	180	89.0
300	290	280	240	200	220	150	210	170	230	75.2
400	340	330	280	230	250	180	240	200	270	66.6
500	380	370	310	260	280	200	260	220	300	60.5
600	420	410	340	280	310	220	280	240	340	55.9
800	480	470	390	330	350	250	320	270	390	49.2
1,000	540	530	440	370	390	280	360	300	450	44.5
1,300	620	610	500	410	440	320	400	340	510	39.6
1,500	660	650	530	440	470	340	430	360	560	37.0
1,800	720	710	580	480	510	360	470	390	610	34.0
2,000	760	750	610	510	540	380	490	410	650	32.4
2,500	850	840	680	560	600	420	540	450	730	29.2
3,000	920	910	740	610	650	450	590	490	800	26.8
3,500	990	980	800	660	700	480	630	520	870	24.9
4,000	1,050	1,050	850	700	740	510	670	550	930	23.3
4,500	1,100	1,100	900	730	780	540	710	580	990	22.0
5,000	1,200	1,150	940	770	820	560	750	600	1,050	20.9
6,000	1,300	1,250	1,000	830	880	600	810	650	1,150	19.1
10,000	1,600	1,600	1,300	1,050	1,100	730	1,050	800	1,500	14.8
20,000	2,200	2,200	1,750	1,400	1,500	920	1,400	1,050	2,050	10.4
50,000	3,250	3,250	2,600	2,050	2,150	1,200	2,150	1,500	3,150	6.3
100,000	4,300	4,300	3,400	2,650	2,850	1,500	3,000	1,900	4,300	4.3
200,000	5,700	5,600	4,500	3,450	3,700	1,750	4,200	2,450	5,800	2.9
300,000	6,600	6,600	5,200	3,950	4,300	1,900		2,800	6,900	2.3
500,000	8,000	7,900	6,300	4,750	5,200	2,100		3,300	8,400	1.7
1,000,000	10,300	10,100	8,100	6,000	6,600				11,100	1.1
2,000,000	13,000	12,800	10,300	7,500	8,400				14,300	0.7
5,000,000	17,600	17,100	13,900						19,700	0.4
10,000,000	21,800								24,800	0.2

## GLOSSARY

*Ceased previous job:* persons who left or lost their previous job.

*Certificate or diploma:* completion of an approved certificate or diploma in secretarial or business studies, administration, teaching, nursing, etc.

*Degree:* a bachelor degree (including honours), a graduate or post-graduate diploma, masters degree or a doctorate.

*Educational attainment:* measures the highest qualification obtained by the respondent. Qualifications may include those obtained at other than educational institutions (e.g. nursing qualifications obtained at a hospital).

*Employees:* persons who worked —

- (a) for an employer for wages or salary; or
- (b) in their own business, either with or without employees, if that business was a limited liability company; or
- (c) for payment in kind.

*Family:* is defined to consist of two or more related persons usually resident in the same household at the time of the survey. A family comprises a married couple or a family head together with any persons having any of the following relationship to them:

- (a) sons or daughters of any age, if not married and with no children of their own at present; or
- (b) other relatives if not accompanied by a spouse, sons or daughters, or parents of their own; or
- (c) any children under 15 years of age who do not have a parent present.

*Highest level of secondary school available:* the highest level of secondary schooling (or equivalent) offered by the education system at the time the respondent left school.

*Job leavers:* persons who voluntarily ceased their last job.

*Job losers:* persons who involuntarily ceased their last job.

*Labour force:* persons in the labour force are those who were reported as having worked or looked for work (as defined).

*Looked for work:* persons who were reported as having been out of work and looking for a job.

*Method of job attainment:* determined by the respondents' answer to the question: 'How did you find out that a job was available?' and is described according to whether an

employer approached the jobseeker or a jobseeker approached the employer. In the latter case, the job is described according to whether or not the jobseeker knew that a job was available before approaching the employer.

*Not in the labour force:* persons who were reported as having neither worked or looked for work (as defined).

*Other post-school qualifications:* completion of other types of education, e.g. adult education, preparatory/bridging course or hobby course.

*Persons who had re-entered the labour force:* persons who were working or looking for work in the reference week (i.e. week before the interview), had a period not in the labour force of at least twelve months duration that finished within the last twelve months and had worked continuously for a period of twelve months or more at some earlier time.

*Persons with a post-school qualification:* those who had left school and answered 'YES' to the question: 'Since leaving school have you obtained a trade qualification, certificate, diploma, degree or any other qualification?'. Respondents indicated which one of the following groups best described their highest qualification: Degree; Trade qualification or apprenticeship; Certificate or diploma; Other post-school qualification.

*Previous job:* the last job that a person reported having worked in continuously for a period of twelve months or more.

*Re-entrants:* see 'Persons who had re-entered the labour force'.

*Still at school:* current school attendance is recorded only for persons aged fifteen to twenty years.

*Time since previous job:* the total time since previous job.

*Time spent not in labour force since previous job:* the time spent neither working or looking for work since previous job. For some persons, this is the same *time since previous job*. However, for those who have worked for periods of less than twelve continuous months and/or have looked for work since leaving their previous job, this time will be less than *time spent since previous job*.

*Trade qualification or apprenticeship:* completion of an approved trade/technical apprenticeship in fitting and turning, hairdressing, plumbing, carpentry, etc.

*Usual gross weekly pay:* the amount of usual total weekly pay (i.e. before taxation and other deductions have been made).

*Worked:* persons who were reported as having either worked or been on paid leave.

## SPECIAL DATA SERVICES

The ABS offers a range of unpublished data from this survey upon request. When ordering special tables from this survey, please ensure you identify the **population(s)** and the **variable(s)** which you require.

This Section specifies the variables, categories and populations which relate to the survey and includes an order form for special tables.

The **population(s)** for a particular variable refers to the persons in the survey to whom the variable relates.

### POPULATIONS

POPULATION 1: Persons aged 15 and over.

POPULATION 2: Persons who were in the labour force at May 1990 but were not in the labour force twelve months ago.

POPULATION 3: Persons who were in the labour force at May 1990 but were not in the labour force twelve months ago and had never worked continuously for at least twelve months.

POPULATION 4: Persons who were in the labour force at May 1990 but were not in the labour force twelve months ago and had never worked before.

POPULATION 5: Persons who were in the labour force at May 1990 but were not in the labour force twelve months ago, had never worked continuously for at least twelve months but had worked at some earlier time.

POPULATION 6: Persons who were in the labour force at May 1990 but were not in the labour force twelve months ago and had worked continuously for at least twelve months at some earlier time.

POPULATION 7: Persons who were in the labour force at May 1990 but were not in the labour force twelve months ago, had worked continuously for at least twelve months at some earlier time and were out of the labour force for less than twelve months.

POPULATION 8: Persons who had re-entered the labour force (i.e. Persons who were in the labour force at May 1990, had a period not in the labour force for at least twelve months duration that finished within the last twelve months and had worked continuously for at least twelve months at some earlier time).

POPULATION 9: Persons who had re-entered the labour force and were working.

POPULATION 10: Persons who had re-entered the labour force and were looking for work.

POPULATION 11: Persons who had re-entered the labour force and were working as employees.

VARIABLE	POPULATIONS	VARIABLE	POPULATIONS
<b>1 STATE</b>	All	<b>9 SUMMARY OF LABOUR FORCE ACTIVITY AND WHETHER HAD RE-ENTERED THE LABOUR FORCE</b>	1
New South Wales		Persons aged 15 and over	
Victoria		Out of the labour force at May 1990	
Queensland		In the labour force at May 1990	
South Australia		In the labour force twelve months ago	
Western Australia		Out of the labour force twelve months ago	
Tasmania		Had never worked continuously for at least twelve months	
Northern Territory		Had never worked before	
Australian Capital Territory		Had worked at some earlier time	
Australia		Had worked continuously for at least twelve months	
		Out of the labour force for less than twelve months	
<b>2 AREA</b>	All	Working at May 1990	
Metropolitan		Looking for work at May 1990	
Non-metropolitan			
<b>3 DISSEMINATION REGION</b>	All		
Standard labour force dissemination region			
<b>4 GENDER</b>	All	<b>10 WHETHER WORKED CONTINUOUSLY FOR AT LEAST TWELVE MONTHS AT SOME EARLIER TIME</b>	2
Males		Had never worked continuously for at least twelve months	
Females		Had never worked before	
<b>5 MARITAL STATUS</b>	All	Had worked at some earlier time	
Married		Had worked continuously for at least twelve months at some earlier time	
Not-married			
<b>6 FAMILY STATUS</b>	All	<b>11 WHETHER WORKING OR LOOKING FOR WORK AT MAY 1990</b>	2-8
Member of a family		Working	
Husband or wife		Looking for work	
With dependents present			
Without dependents present		<b>12 WHETHER WORKED AT SOME EARLIER TIME</b>	3
Sole parent		Had never worked before	
Other family head		Had worked at some earlier time	
With dependents present			
Without dependents present		<b>13 EDUCATIONAL ATTAINMENT AT MAY 1990</b>	2-11
Full-time student aged 15-24 (a)		With post-school qualifications	
Other child (b) of married couple or family head		Degree	
Other relative of married couple or family head		Trade qualifications or apprenticeship	
Not a member of a family		Certificate or diploma	
Living alone		Other	
Not living alone		Without post-school qualifications	
Family status not determined		Attended highest level of secondary school available	
(a) Excludes persons aged 20-24 attending school.		Did not attend highest level of secondary school available	
(b) Aged 15 and over.		Never attended school	
<b>7A BIRTHPLACE</b>	All	Secondary school qualifications not determined	
Born in Australia		Still at school	
Born outside Australia		Not asked	
Main English speaking countries (a)		(a) Includes persons aged 65 and over who were not asked their educational qualifications.	
Other countries (b)			
Not asked		<b>14 ALL STEPS TAKEN TO FIND WORK DURING THE LAST TWELVE MONTHS</b>	3-11
(a) Comprises United Kingdom, Ireland, Canada, South Africa, USA, and New Zealand.		Registered with the CES	
(b) Includes persons born at sea.		Contacted prospective employers	
<b>7B BIRTHPLACE AND PERIOD OF ARRIVAL</b>		Checked factory or CES noticeboards	
Born in Australia		Checked or registered with any other employment agency	
Born outside Australia		Looked in newspapers	
Arrived before 1971		Answered a newspaper advertisement for a job	
Arrived 1971-1980		Advertised or tendered for work	
Arrived 1981 - 1990		Contacted friends or relatives	
Not asked		Other steps	
<b>8 AGE</b>	All	Had not looked for work	
15-24			
25-34			
35-44			
45-54			
55 and over			



VARIABLE	POPULATIONS
15	<b>ACTIVE STEPS TAKEN TO FIND WORK DURING THE LAST TWELVE MONTHS</b> 3-11 Had looked for work Registered with CES Took no other active steps Contacted prospective employers Took other active steps Not registered with CES Took only inactive steps Contacted prospective employers Took other active steps Had not looked for work
16	<b>ALL DIFFICULTIES IN FINDING WORK DURING THE LAST TWELVE MONTHS</b> 3-11 Own ill health or disability Considered too young or too old by employers Unsuitable hours Too far to travel/transport problems Lacked necessary skills/education Language difficulties Insufficient work experience No vacancies in line of work No vacancies at all Ethnic background Other difficulties No difficulties at all Had not looked for work
17	<b>MAIN DIFFICULTY IN FINDING WORK DURING THE LAST TWELVE MONTHS</b> 5-11 Had looked for work Own ill health or disability Considered too young or too old by employers Unsuitable hours Lacked necessary skills/education Insufficient work experience No vacancies in line of work No vacancies at all Other difficulties(a) No difficulties at all Had not looked for work  (a) Includes too far to travel/transport problems; language difficulties; and difficulties with ethnic background.
18	<b>MAIN ACTIVITY BEFORE WORKING</b> 4 Home duties/childcare Attending an educational institution Retired/voluntarily inactive Own illness/injury; own disability/handicap Travelled/moved house/holiday Other(a)  (a) Includes unpaid leave; looked after ill or disabled person; worked in unpaid voluntary job; and looked for work.
19	<b>TIME SINCE PREVIOUS JOB</b> 5-11 1-2 years 3-9 years 3-4 years 5-9 years 10 years or more 10-19 years 20 years or more

VARIABLE	POPULATIONS
20	<b>FULL-TIME OR PART-TIME WORKER IN PREVIOUS JOB</b> 5-11 Previous job less than 20 years ago Full-time Part-time Varied/did not know Previous job 20 or more years ago
21	<b>OCCUPATION IN PREVIOUS JOB</b> 5-11 Previous job less than 20 years ago Managers and administrators Professionals Para-professionals Tradespersons Clerks Salespersons and personal service workers Plant and machine operators, and drivers Labourers and related workers Previous job 20 or more years ago
22	<b>STATUS OF WORKER IN PREVIOUS JOB</b> 3-11 Previous job less than 20 years ago Employers Self-employed Wage and salary earners Unpaid family helpers Previous job 20 or more years ago
23	<b>TIME IN PREVIOUS JOB</b> 5 Previous job less than 20 years ago Under 6 months 6 and under 12 months 12 months or more Previous job 20 or more years ago
24	<b>REASON FOR CEASING PREVIOUS JOB</b> 5-11 Job loser Retrenched Job was temporary or seasonal and did not leave to return to studies Own ill health or injury Business closed down for economic reasons Job leaver Unsatisfactory work arrangements Retired/didn't want to work any longer Returned to studies To get married Pregnancy/to have children To look after family, house or someone else To have holiday/to move house/ spouse transferred Other(a)  (a) Includes job was temporary or seasonal and left to return to studies; and business closed down for other reasons.
25	<b>MAIN ACTIVITY WHILE OUT OF LABOUR FORCE SINCE PREVIOUS JOB</b> 5-11 Retired/voluntarily inactive Attending an educational institution Home duties/childcare Own illness/injury; own disability/handicap Travelled/moved house/holiday Other(a)  (a) Includes unpaid leave; looked after ill or disabled person; and worked in unpaid voluntary job.

VARIABLE	POPULATIONS	VARIABLE	POPULATIONS
26	<b>EDUCATIONAL ATTAINMENT WHEN CEASED PREVIOUS JOB</b> 5-11 With post-school qualifications Degree Trade qualification or apprenticeship Certificate or diploma Other Without post-school qualifications Attended highest level of secondary school available Did not attend highest level of secondary school available Left at age- 16 or over 15 or under Never attended school Still at school	31	<b>OCCUPATION AT MAY 1990</b> 9,11 Managers and Administrators Professionals Para-professionals Tradespersons Clerks Salespersons and personal service workers Plant and machine operators and drivers Labourers and related workers
27	<b>HIGHEST EDUCATIONAL QUALIFICATION GAINED SINCE PREVIOUS JOB</b> 5-11 Previous job less than 20 years ago Had gained an educational qualification since previous job Degree Trade qualification or apprenticeship Certificate or diploma Other Had not gained an educational qualification since previous job Never attended school Still at school Previous job 20 or more years ago	32	<b>INDUSTRY AT MAY 1990</b> 9,11 Agriculture, forestry, fishing and hunting Manufacturing Construction Wholesale and retail trade Transport and storage; communication Finance, property and business services Community services Recreation, personal and other services Other(a)  (a) Includes Mining, and Electricity gas and water.
28	<b>MAIN REASON FOR WANTING TO WORK AGAIN</b> 5-11 Completed studies Financial reasons Returned after own illness or injury Children gone to school/no longer needed to look after children Boredom/needed another interest To help in family business/bought business Other(a)  (a) Includes returned after illness or injury of another person; returned from travel; suitable childcare available; returned from unpaid leave and spouse transferred.	33	<b>STATUS OF WORKER AT MAY 1990</b> 9,11 Employers Self-employed Wage and salary earners Unpaid family helpers
29	<b>TIME SPENT OUT OF LABOUR FORCE SINCE PREVIOUS JOB</b> 5-7 Under 12 months Under 6 months 6 and under 12 months 1 year or more	34	<b>WHETHER LOOKING FOR FULL-TIME OR PART-TIME WORK AT MAY 1990</b> 10 Looking for full-time work Looking for part-time work
30	<b>FULL-TIME AND PART-TIME WORKERS AT MAY 1990</b> 9,11 Full-time workers Part-time workers	35	<b>METHOD OF JOB ATTAINMENT</b> 11 Jobseeker approached employer Had no prior knowledge that job was available First step taken- Contacted likely employers Other(a) Had prior knowledge that job was available Through newspaper advertisements Through friends/relatives/company contacts Other(b) Employer approached jobseeker Not asked  (a) Includes tendered/advertised for work. (b) Includes through CES; through private employment agency; and through welfare agency or organisation.
		36	<b>USUAL GROSS WEEKLY PAY AT MAY 1990</b> 11 Under 120 120 and under 160 160 and under 200 200 and under 240 240 and under 280 280 and under 320 320 and under 360 360 and under 400 400 and over Did not know Payment in kind



## SPECIAL DATA REQUEST ORDER FORM

### PERSONS WHO HAD RE-ENTERED THE LABOUR FORCE, MAY 1990

Please specify your special data request(s) on the order form provided on the following page.

The following points should be noted when requesting special tables:

1. Table requests will be available on computer printout, floppy disk or microfiche.
2. The current cost of special tables is as follows—

No. of variables (excluding populations)	Cost per table (\$)
2	120
3	150
4	210
5	300
6 or more	negotiable

- Note: (i) For tables provided on floppy disk, an additional cost of \$65 per disk will be charged;  
(ii) For tables provided on microfiche, an additional cost of \$50 plus \$5 per fiche will be charged ;  
(iii) Prices quoted are subject to revision.

3. Return the completed order form together with the address advice to—

Assistant Director  
Labour Force Supplementary Surveys  
Australian Bureau of Statistics  
PO Box 10  
Belconnen ACT 2616

4. The invoiced cost is payable in full within 14 days of supply.
5. Any inquiries about this order should be directed to Ms Cheryl Trussler on (06) 252 6661.



-----  
**ADDRESS ADVICE — DETACH AND FORWARD TOGETHER WITH YOUR COMPLETED ORDER FORM.**

Please send my order and invoice to —

NAME \_\_\_\_\_

ORGANISATION \_\_\_\_\_

ADDRESS \_\_\_\_\_

POSTCODE \_\_\_\_\_

TELEPHONE \_\_\_\_\_

Signature \_\_\_\_\_

Date / /













ABS Catalogue No. 6264.0 PERSONS WHO HAD RE-ENTERED THE LABOUR FORCE, AUSTRALIA, May 1990



2062640012902

ISBN 0 642 15477 5

Recommended retail price: \$10.50